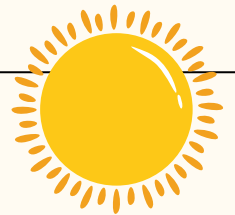


WELCOME TO OUR  
**Monthly Newsletter**  
*Bienvenidos!*



## LMSA Faculty Spotlight

### MEET DR. LILIA CORREA-SELM, MD



Dr. Lilia Correa-Selm is a U.S. board certified dermatologist and internist, international dermatologist, fellowship trained Mohs micrographic surgeon and expert confocalist. She is an Associate Professor at the Dermatology Department of USF Health and is part of the cutaneous oncology multidisciplinary team at Moffitt Cancer Center.

Prior to being at USF/Moffitt, she was the Director of Cutaneous Surgery at Cleveland Clinic Indian River Hospital while also teaching as an assistant professor at FSU. She previously completed fellowships in Mohs micrographic surgery, confocal microscopy, and laser/cosmetic research after completing her Dermatology residency at Rutgers - Robert Wood Johnson Medical School. She completed her Internal Medicine residency at Cornell New York Downtown Hospital, and performed research at Harvard's renowned Beth Israel Deaconess Medical Center in Boston and Memorial Sloan Kettering Cancer in New York, following spending one year as a physician in a remote underserved area of South America. She is a published author of numerous book chapters in dermatology as well as articles in important medical journals.

Dr. Correa is looking forward to connecting with all the faculty and medical students that are part of our Latino legacy and sharing all our traditions, food, music and life in general. She feels that we are part of a fun group and if we get together, we will be able to double that fun. She advises all students to be themselves, to give their 110% every day without losing their human side, and to always be willing to help our patients.



## Faculty Mentors

FIND OUT MORE ABOUT THE FACULTY SUPPORTING LMSA @ MCOM. ON OUR TEAMS PAGE, STUDENTS CAN REFER TO OUR CURRENT LIST OF LATINO FACULTY WILLING TO SUPPORT THEM IN THE AREAS OF SHADOWING, RESEARCH, AND CAREER ADVISING.

[FIND OUT MORE](#)

## Welcome Back

WE WOULD LIKE TO WELCOME BACK RETURNING STUDENTS AND NEW FIRST YEAR STUDENTS TO MCOM! WE ARE LOOKING FORWARD TO ALL THAT THIS NEW SCHOOL YEAR HAS IN STORE FOR OUR ORGANIZATION. PLEASE REFER TO OUR NEWSLETTERS FOR OPPORTUNITIES TO GET TOGETHER THIS SEMESTER!

PHOTO BY BRUNA BRANCO ON UNSPLASH



## Easy "Recetas"

RECIPES FOR BUSY MED STUDENTS

**Added This Month:** Fish Ceviche, Gallo Pinto, and Guava Pastries

[CLICK FOR FULL RECIPES](#)

PHOTO BY CDC ON UNSPLASH



## Volunteering

OPPORTUNITIES THIS MONTH

At LMSA we are all about giving back! Click below to find the latest opportunities.

[FIND OUT MORE](#)

PHOTO BY ADRIA CHRIS LAWTON ON UNSPLASH



## Upcoming Events

PRÓXIMOS EVENTOS

**This Month:** School Year Kickoff Student/Faculty Mixer. Access the link below for more information.

[NEW EVENTS](#)

# LMSA on Holiday

### WHAT WERE OUR MEMBERS UP TO THIS SUMMER?



JOSE MALAVET, MS3



SOPHIA ESTRADA, MS2



MAYSIE CALZON, MS2



GABRIELA PINERO-CRESPO, MS2

**Jose Malavet, MS3:** Passed Step 1 and started rotations for third year! Currently on my surgery clerkship and really enjoying my time spent in the hospital and with patients!

**Richard (Ricky) Rivera, MS2:** Completed the Medical Student Summer Research Fellowship (MSSRF) in Orthopaedics at the Hospital for Special Surgery in New York City.

**Sophia Estrada, MS2:** Traveled to Arizona for the first time to visit my best friend!

**Maysie Calzon, MS2:** Worked on research in Tampa and visited Costa Rica with my family!

**Gabriela Pinero-Crespo, MS2:** As part of the international medicine scholarly concentration, I traveled to Sevilla, Spain to conduct a research project and rotate within the department of dermatology at a hospital there!

# Contact Our E-Board

**President: Gabriela Pinero-Crespo**  
[gpinerocrespo@usf.edu](mailto:gpinerocrespo@usf.edu)

**Vice President: Gabriella Blanco**  
[blanco41@usf.edu](mailto:blanco41@usf.edu)

**Secretary: Marilyn Torres**  
[mtorres260@usf.edu](mailto:mtorres260@usf.edu)

**Treasurer: Sophia Estrada**  
[sophiael@usf.edu](mailto:sophiael@usf.edu)

**Faculty Advisor: Dr. Javier Cuevas**  
[jcuevas@usf.edu](mailto:jcuevas@usf.edu)

**PR Chair: Amberlyn Colina**  
[amberlyncolina@usf.edu](mailto:amberlyncolina@usf.edu)

# How to Support LMSA



## DONATIONS AND CONTRIBUTIONS

LMSA @ MCOM is asking for support via donations to kick start the events we plan to have this upcoming year! As a new student organization, we are not yet part of the student government budget, and must rely on donations until the application for this year's budget opens. You can find the information for costs per event using the following link, and make donations to our treasurer's venmo or Zelle using the QR codes. Any dollar amount is appreciated, and we thank you for your support! Alternatively, donations of food items to any event would be appreciated as well! (email [gpinerocrespo@usf.edu](mailto:gpinerocrespo@usf.edu) for the latter option)



**venmo**



**zelle**

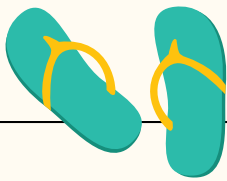
787-361-3081

### EVENTS

### ESTIMATED COST

<b>AUG:</b> Student/Faculty Mixer	\$200.00
<b>SEP:</b> Hispanic Heritage Month Potluck	\$12.00
<b>OCT:</b> Mentoring LMSA+ Undergrad Chapter	\$100.00
<b>NOV:</b> Faculty Panel	\$70.00
<b>JAN:</b> Centro Asturiano Tour	\$0.00
<b>MAR/APR:</b> Annual Paella Night	\$80.00

## DONATION INFORMATION



## Join Our "Grupito"

Click the links below to join LMSA at the University of South Florida Morsani College of Medicine. We are so excited for you to join us!

### STUDENTS

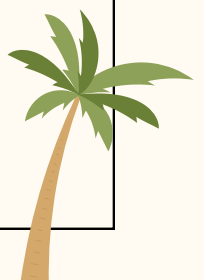
[BULLSCONNECT SIGN UP](#)

[TEAMS SIGN UP](#)

[JOIN OUR GROUPME](#)

### FACULTY

[TEAMS SIGN UP](#)



EDITED BY: AMBERLYN COLINA